



**EVERY CHILD
SUCCEEDS[®]**

Preparing new mothers for the work of a lifetime.

2011 Report Card

	FY2010	FY2011
Families Served ¹	3,169	2,871
Home Visitation	2,845	2,678
Service Coordination (Part C)	324	193
Home Visits	36,273	34,077
Risk Factors		
Unmarried	94%	91%
Low Income	95%	95%
Younger than 18	24%	24%
Inadequate Prenatal Care	34%	33%
Other Social Challenges ²	85%	85%
Race/Ethnicity		
Caucasian	50%	52%
African-American	35%	34%
Hispanic	9%	9%
Other or unknown	5%	5%
Prenatal at Enrollment	66%	60%
Fathers Participating in at Least One Home Visit	45%	45%
Families Connected to Other Social Services	62%	65%
Educational Material Distributed		
Parent Aid Bags	16,797	15,927
Age-appropriate Books	14,038	13,169
Healthwise Handbooks	457	523
Children and Mothers are Safe and Healthy³		
Immunizations up to date	67%	70%
Children with a medical home	99%	97%
Children with a safe play environment	95%	96%
Mothers who initiated breast-feeding	66%	70%
Mothers who reduced or quit smoking	18%	16%

FY2010**FY2011****Children Are Developing Normally³**

	FY2010	FY2011
Gross Motor Skills	97%	98%
Fine Motor Skills	96%	98%
Language Development	95%	97%
Social / Emotional Development	96%	97%
Problem Solving	94%	97%

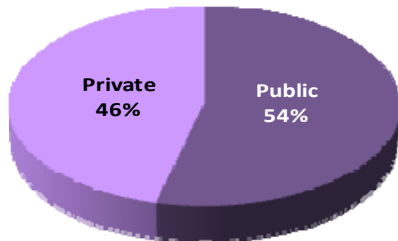
Children Are Thriving in a Stimulating Environment for Learning and Development³

	FY2010	FY2011
Parents are responsive to their child's learning & emotional needs	97%	99%
Parents' interactions with child are positive & accepting	92%	93%
Parents organize child's care, outings & home environment	98%	99%
Home has appropriate learning materials to stimulate development	97%	98%
Parents are actively involved in their child's learning	96%	97%
Child's daily life includes some variety of people and events	99%	99%

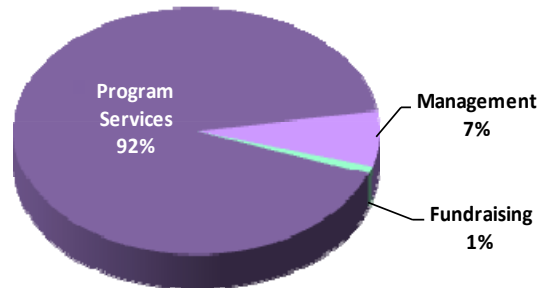
FY2011 Financial Highlights : Total Expenses \$7,499,516

Maintained Strong Public/Private Partnership

Public - Private Funding Mix

**Kept Administrative Costs Low**

Program vs. Administrative Cost

**Received Two Federal Grants**

- ◆ Childhood Home Injury Prevention Study (CHIP): This \$3.1 million NICHD grant is to conduct a clinical trial on an injury prevention intervention developed by K.J. Phelan, M.D., a CCHMC pediatrician. The study will recruit 1,000 ECS mothers over a 5 year period.
- ◆ Mother and Infant Depression Improvement Study 2 (MIDIS2): This \$2.8 million NIMH grant replicates and extends the MIDIS study by comparing IH-CBT to a second therapy. The study will recruit 220 ECS mothers over a 5 year period.

Notes

1 Families served are those that received at least one home visit and/or assessment visit during time period.

2 Other social challenges include social isolation, mental illness, substance abuse, and/or related concerns.

3 Outcomes are based on those ECS At Risk and ECS Part C Families for whom the evaluation tools were administered and results reported during either FY10 or FY11. Because these tools are administered at different ages or different participation times, and because some families leave and others join over the course of a year, the numerical bases for the above percentages vary from one measure to another. The following measures were used to gather the above data relative to outcomes: Ages & Stages Developmental Inventory, HOME Inventory, and health surveys.